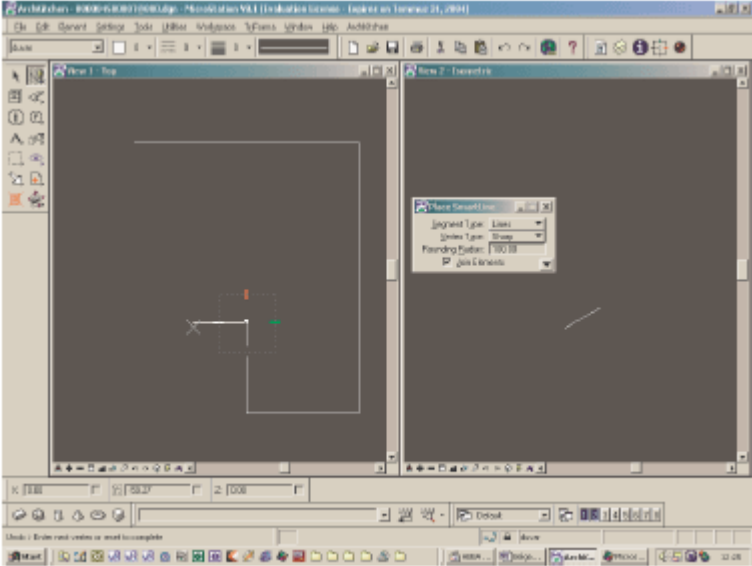
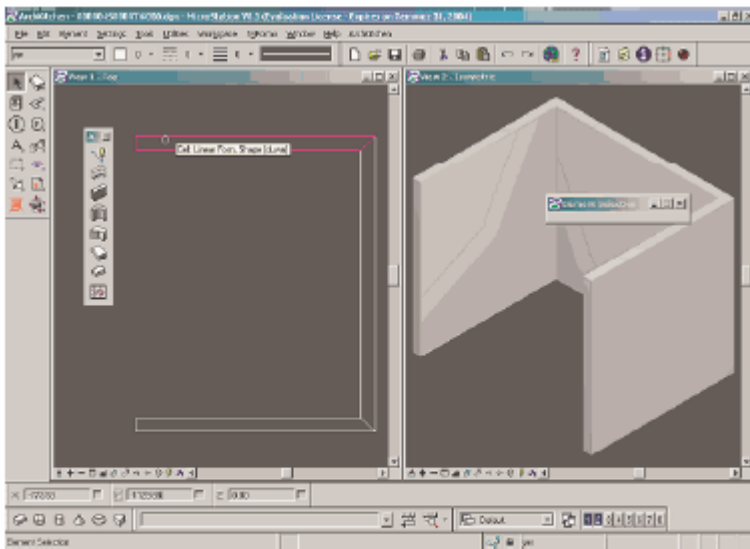
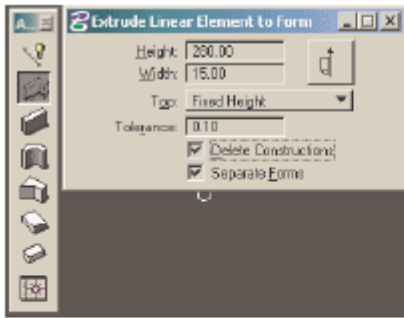


The formation line of a kitchen design in ArchKitchen

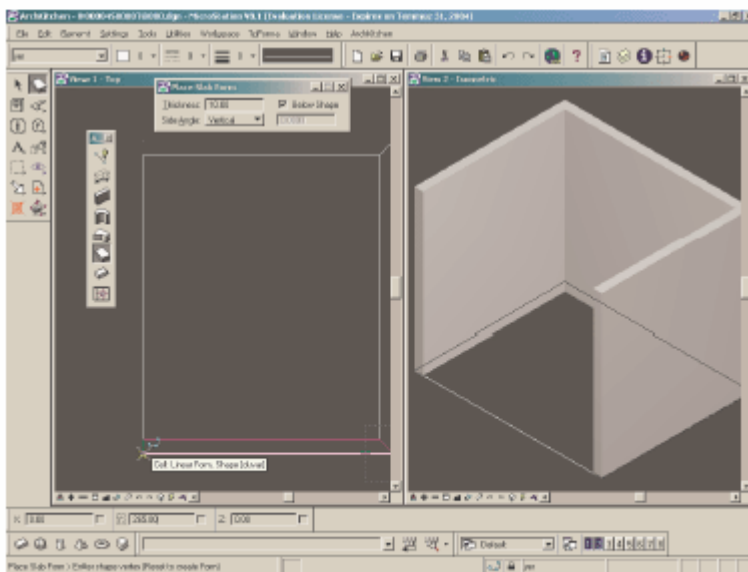
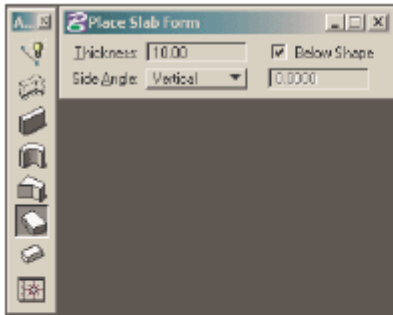
1. Draw the plan with *place smart line* according to interior wall measures.



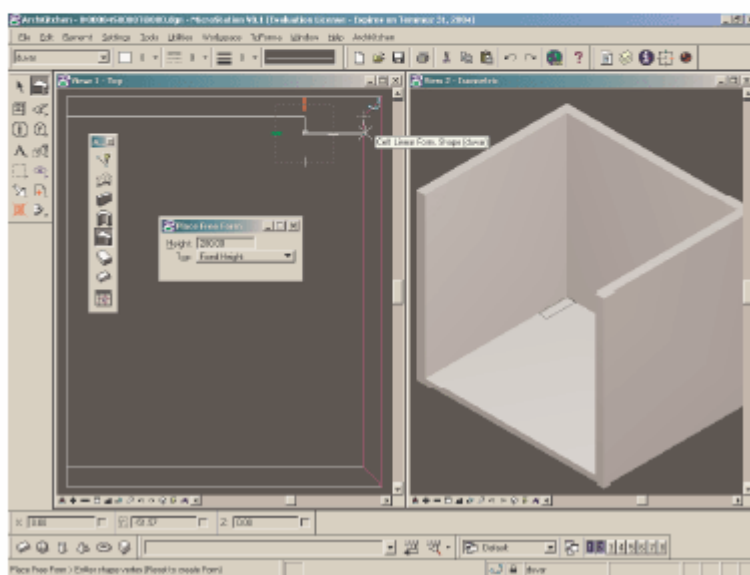
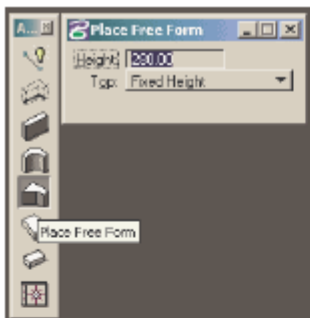
2. Constitute the walls with *extrude linear element to form* command.



3. Draw the flooring with *place slab form* command.

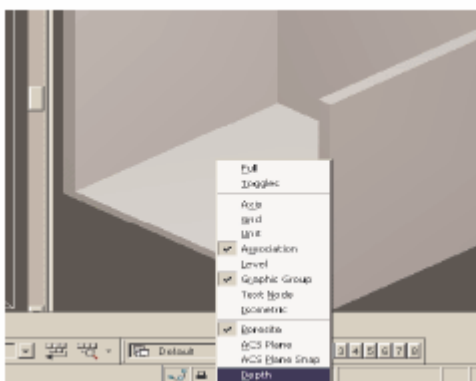


4. Draw the columns with *place free form* command.

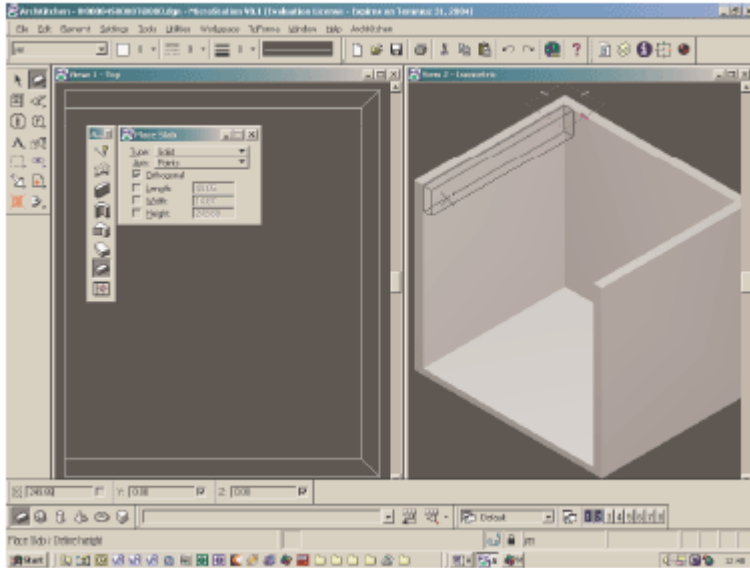


5. Draw the beams with *place slab form* command.

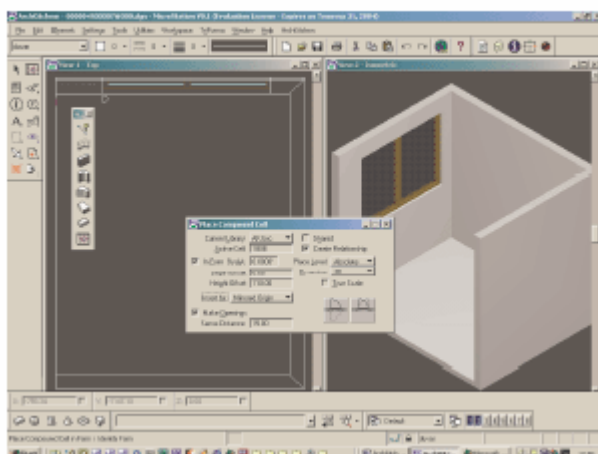
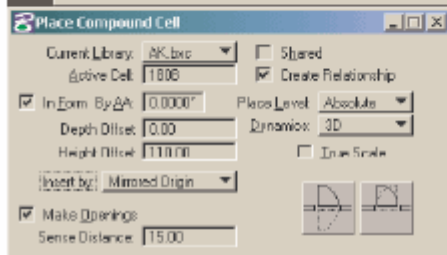
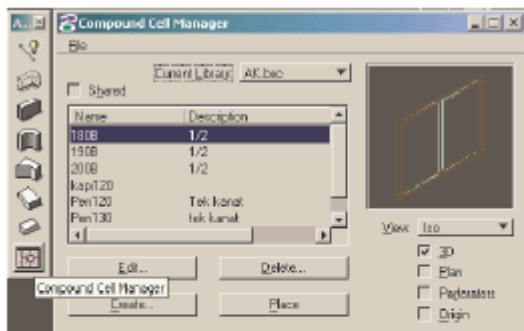
But before, close the depth lock on isometric window.



After that draw the beams.



6. Place the window and door with **compound cell manager** command. For window, the height of the parapet should be written in **height offset** line, and the wall thickness could be written in **sence distance** line. For the door, height offset must be 0.



7. Place the lower corner cupboards.
8. Place the lower cupboards.
9. Draw the bases.
10. Draw the workbenches.
11. If will be used, draw the wall pano.
12. Draw the skirting.
13. Starting from the corner, draw the ceiling cabinets.
14. Draw the lightband and the lightplake.
15. Draw the crown band.
16. Place the kelebek accessories.
17. Place the equipments, sink and battery.