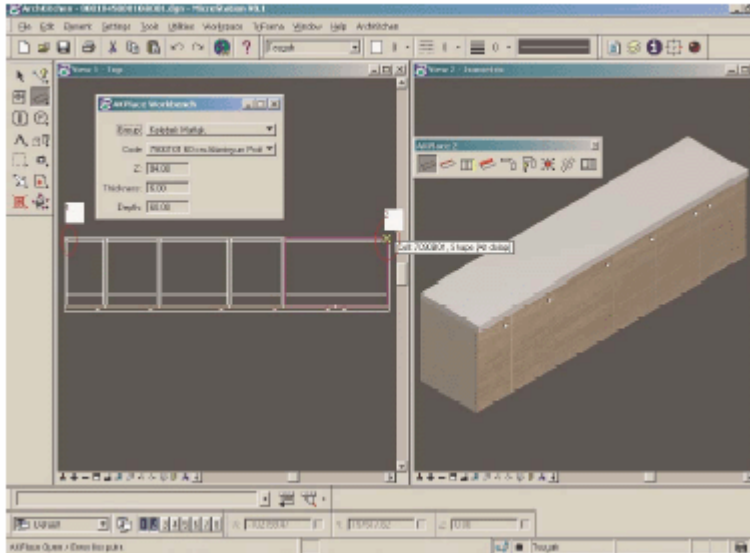


AK PLACE 2 TOOL GROUP

1. Place workbench



Draw the workbench from left to right, clicking on two points on the carpets by the wall side.



If you choose a workbench with 106 cm depth, you must enter the net depth to the depth part.

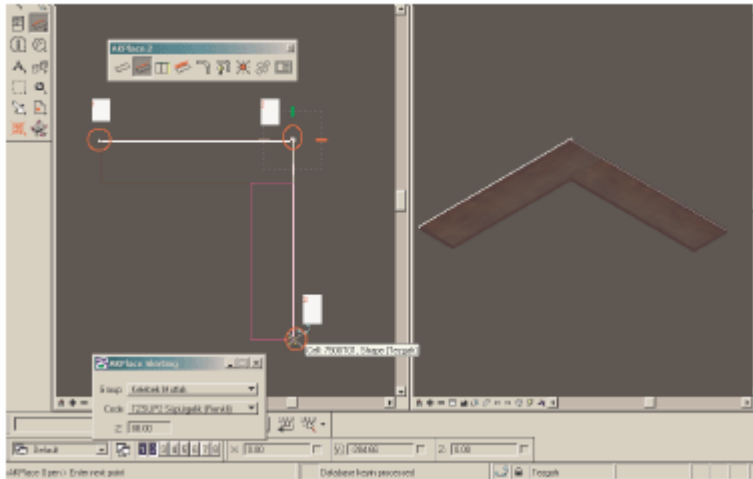
If the workbench is with aluminium profil, you should draw with **AK place workbench profil** command.



2. Place skirting



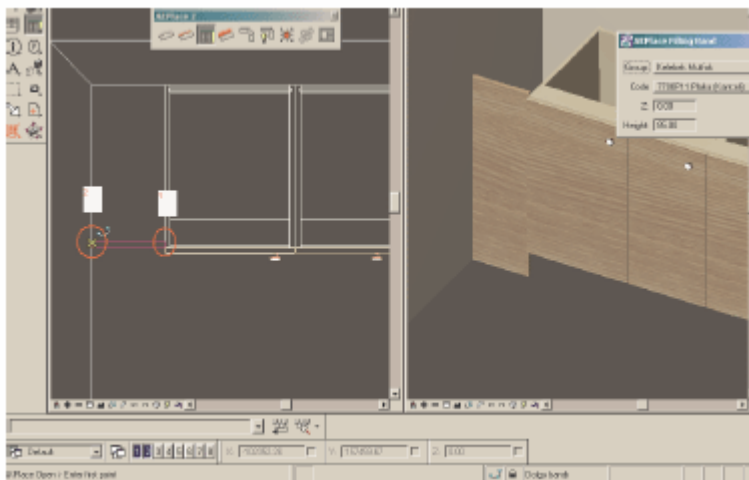
Draw the skirting from left to right, catching from the workbench's back ends or the wall or column unions.



3. Place filling band



The filling band places between the wall and cupboard or another element. It is drawn on the front side from left to right.

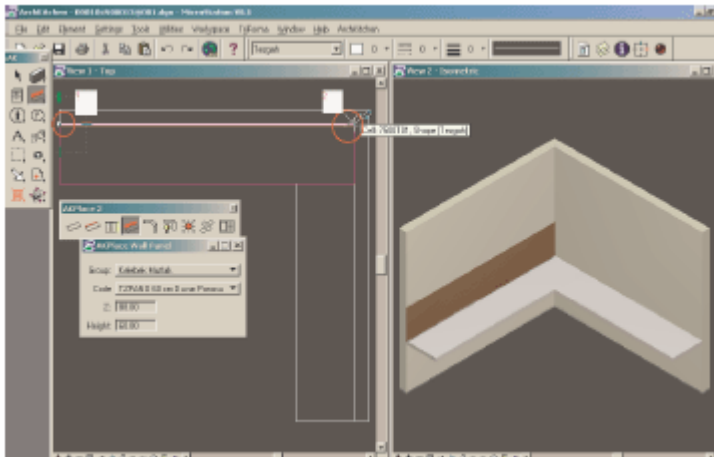


Z: Height (from the ground)
Height: The elevation of the band

4. Wall panel



The wall panel places at the joining of the workbench and the wall. Draw it from left to right.

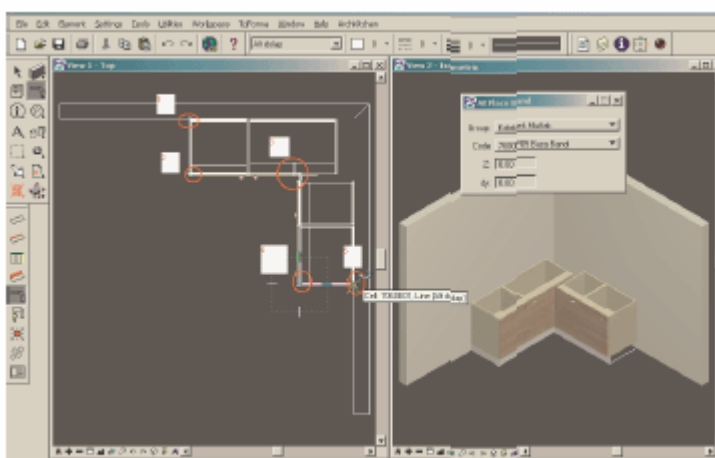


Z: Height from the ground
Height: The elevation of the panel

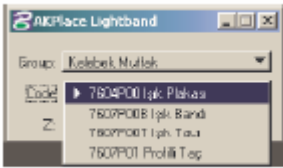
5. Place band



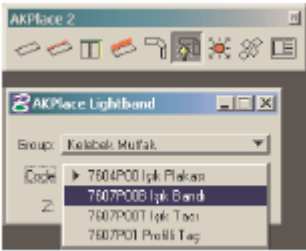
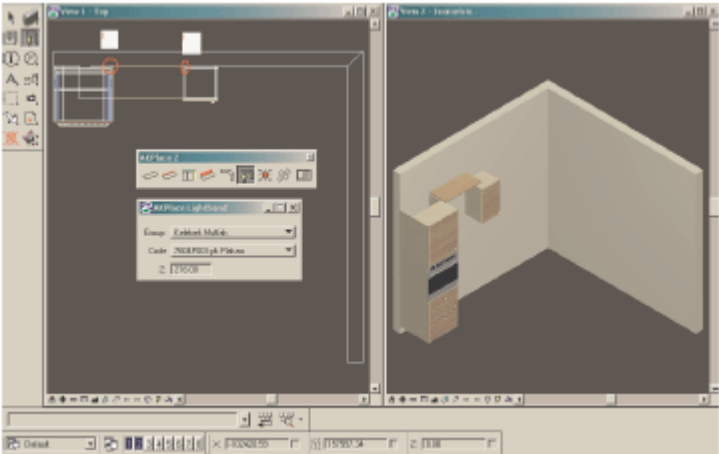
Draw the band from left to right, catching from the trunk ends.



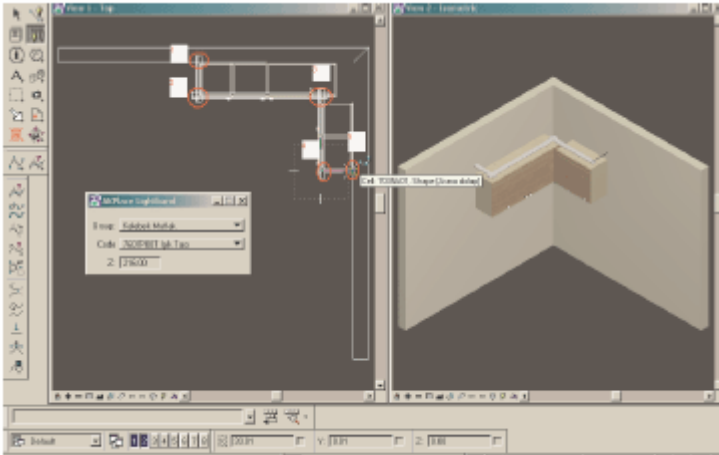
6. Light band: Light plate, light band, crown with profile, light crown



Draw it right to left entering 2 points, at the joining of the plate and the wall.



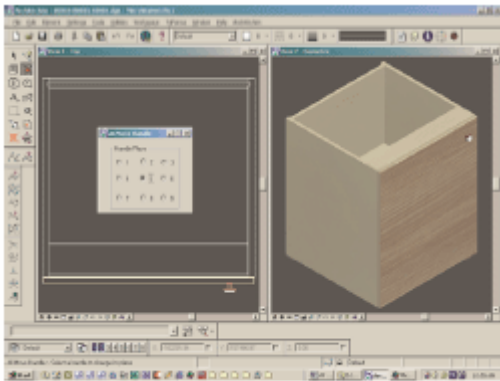
Draw the light band, light crown and crown with profile in the same way (the graphic below). Click the trunk ends from left to right.



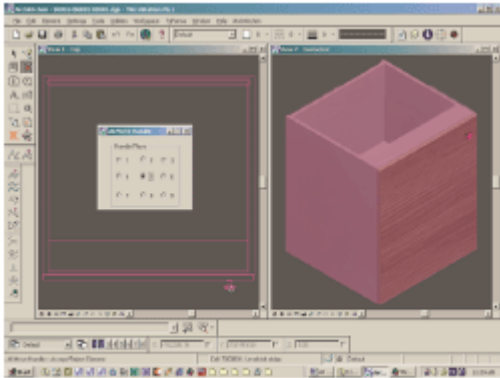
7. AK Move Handle



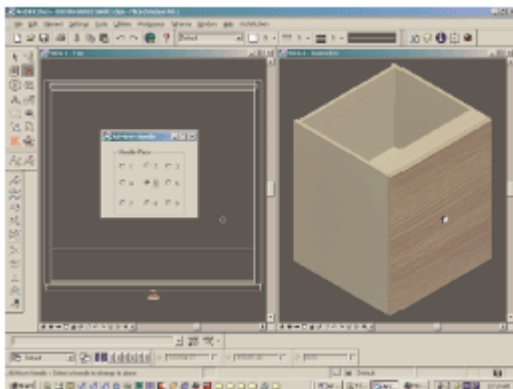
7a First take the *move handle* command and then choose the point (one of 9 points) you want to move the handle.



7b Choose with clicking on the handle.



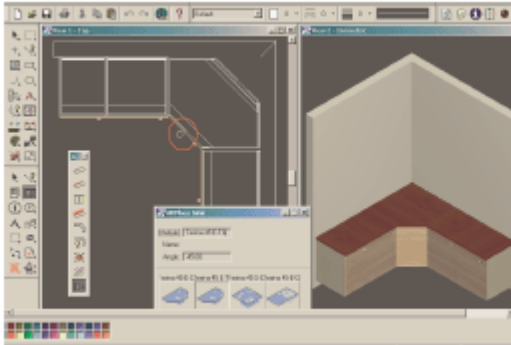
7c Click on blank space.



8. AK Place Sink



First enter the angle value to the *Angle* window. Choose the sink. Click on the workbench.



When you place the sink appropriately, finish it with left click.

