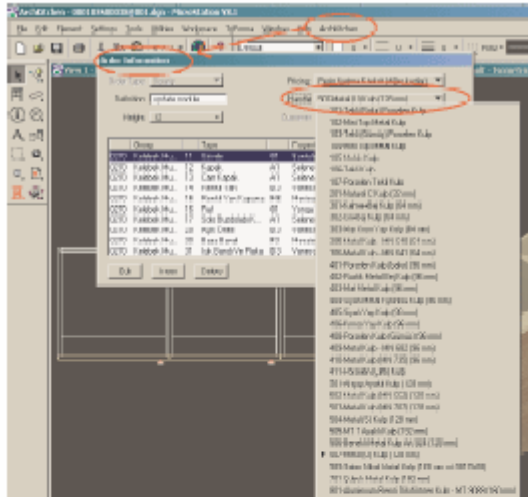


Choosing and Changing a Handle in ArchKitchen

For making collective handle changes, you should enter in *ArchKitchen* > **Order Information** > **Handle**. The handle that you chose from the list, will be applied to all of the cupboards.



To change just one module's handle, you choose the module first. Then you enter in **AK Update module** command. You choose the handle from list and click on the update button.